

TZ1LE024MVAB-R (ORDER NO. 089434)

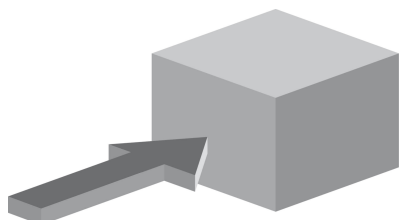
Safety switch TZ

- ▶ Auxiliary release on the front
- ▶ Two LED indicators, red and green
- ▶ Actuating head fitted left



Description

Approach direction



Figure

Horizontal

Can be adjusted in 90° steps

Solenoid operating voltage and LED function display

- ▶ 24 V AC/DC -15%, +10%

Guard locking type

TZ1 Closed-circuit current principle, guard locking by spring force. Release by applying voltage to the solenoid.

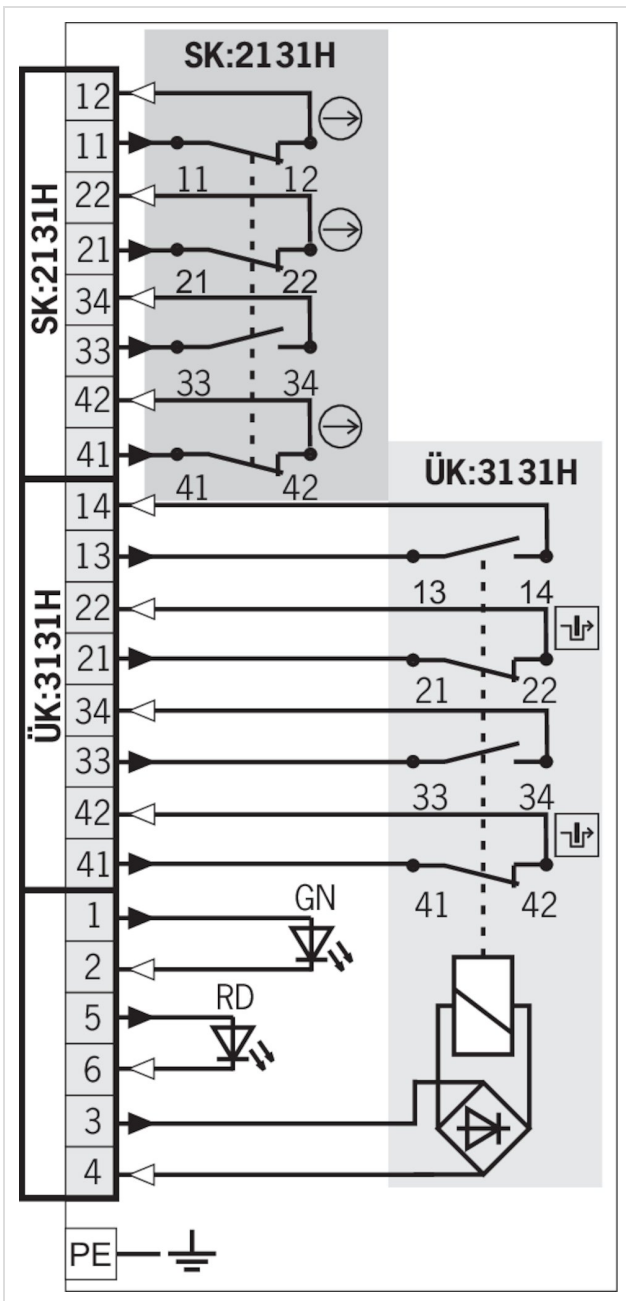
Switching elements

SK For monitoring the door/actuator position

ÜK For monitoring the guard locking (built-in solenoid)

2131H Slow-action switching contact 3 NC \rightarrow + 1 NO

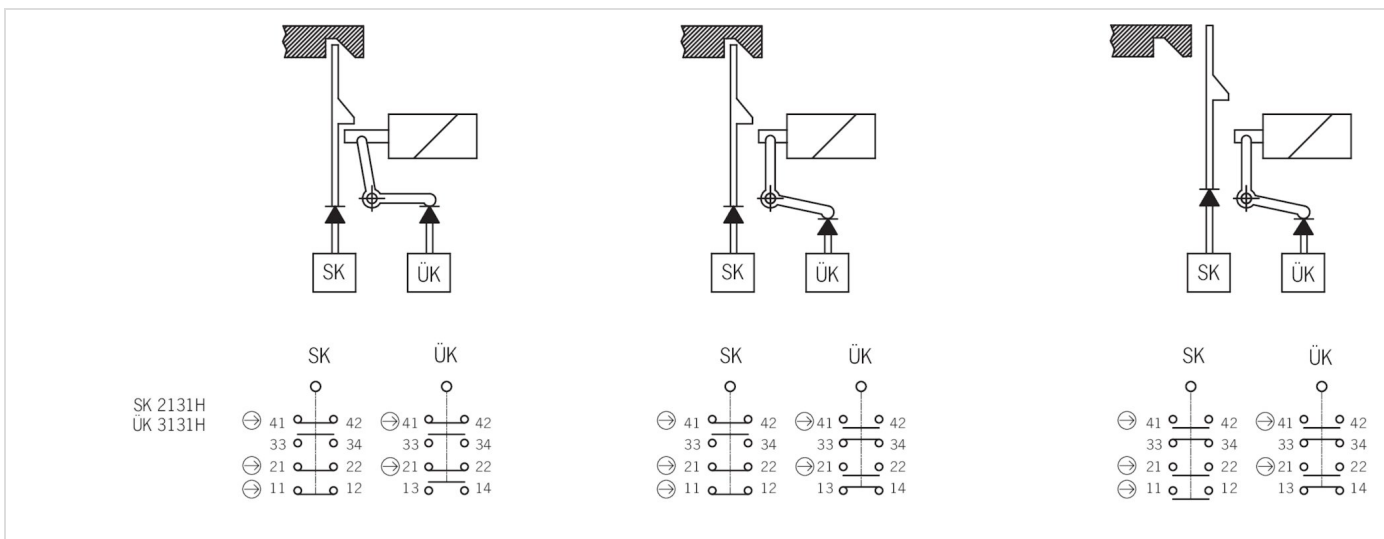
3131H Slow-action switching contact 2 NC \rightarrow + 2 NO



□ Solenoid monitoring

■ Door monitoring

Switching functions



Technical data

Approvals



Mechanical values and environment

Housing material

Housing Anodized die-cast alloy

Weight

Net 1,2 kg

Ambient temperature

-25 ... 80 °C

Degree of protection

IP67

Mechanical life

1 x 10⁶

Contact material

Silver alloy, gold flashed

Switching principle

Slow-action switching contact

Installation orientation

Any

Number of door position positively driven contacts

3

Number of door position NO contacts

1

Number of guard lock monitoring positively driven contacts

2

Number of guard lock monitoring NO contacts

2

Connection

1 x M20 x 1.5

Approach speed

max.20 m/min

Actuation frequency

max.1200 1/h

Guard locking principle

Closed-circuit current principle

Locking force F_{max}

2000 N

Locking force F_{Zh}

1500 N

Retention force

10 N

Extraction force

30 N

Actuating force

35 N

Insertion depth

52 mm

Lid

Red

Electrical connection ratings

Thermal rated current I_{th}	4 A (> 70 °C => 2 A)
Utilization category acc. to EN 60947-5-1	
	AC-15 4A 230V (> 70 °C => 2 A)
	DC-13 4A 24V (> 70 °C => 2 A)
Solenoid operating voltage	
	AC/DC 24 V -15% ... +10%
Short circuit protection according to IEC 60269-1	4A gG (>70°C => 2A gG)
Rated insulation voltage U_i	250 V
Rated impulse withstand voltage U_{imp}	2,5 kV
Switching voltage	
	Min. at 10mA 12 V
Switching current	
	Min. at 24V 1 mA
Connection rating	10 W
Solenoid duty cycle	100 %
Connection cross-section	0,34 ... 1,5 mm ²
LED indicator	Operating voltage corresponds to the solenoid voltage (2 LEDs; green, red)

Reliability values according to EN ISO 13849-1

	Control of the guard locking
Category	Depending on external control of guard locking
Performance Level	Depending on external control of guard locking
PFH _D	Depending on external control of guard locking
	Monitoring of guard locking and the safety guard position
B10 _D	3 x 10 ⁶

In combination with Actuator BETAETIGER-Z-G

Mechanical values and environment

Overtravel	4 mm
------------	------

In combination with Actuator BETAETIGER-Z-GN

Mechanical values and environment

Overtravel	16 mm
------------	-------

Accessories

Actuator

Actuators for safety switches NZ.VZ, NZ.VZ.VS and TZ





074411
BETAETIGER-Z-G/V25

- ▶ Two stainless safety screws per actuator
- ▶ Packaging unit 25 pieces



097436
BETAETIGER-Z-GME

- ▶ Made of solid stainless steel
- ▶ Two stainless safety screws per actuator



072251
BETAETIGER-Z-GN

- ▶ Two stainless safety screws per actuator

Hinged actuator bottom for safety switches NZ.VZ, NZ.VZ.VS and TZ



074414
RADIUSBETAETIGER-Z-U/V25

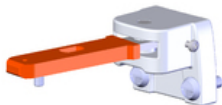
- ▶ Two stainless safety screws per actuator
- ▶ Packaging unit 25 pieces



048850
RADIUSBETAETIGER-Z-U

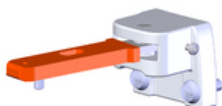
- ▶ Two stainless safety screws per actuator

Hinged actuator left for safety switches NZ.VZ, NZ.VZ.VS and TZ



024298
RADIUSBETAETIGER-Z-L

- ▶ Two stainless safety screws per actuator



074413
RADIUSBETAETIGER-Z-L/V25

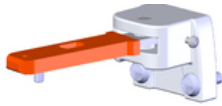
- ▶ Two stainless safety screws per actuator
- ▶ Packaging unit 25 pieces



100407
RADIUSBETAETIGER-Z-L-C2194

- ▶ Two stainless safety screws per actuator
- ▶ Smaller door radii

Hinged actuator right for safety switches NZ.VZ, NZ.VZ.VS and TZ



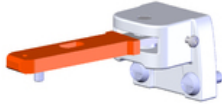
074412
RADIUSBETAETIGER-Z-R/V25

- ▶ Two stainless safety screws per actuator
- ▶ Packaging unit 25 pieces



100406
RADIUSBETAETIGER-Z-R-C2194

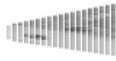
- ▶ Two stainless safety screws per actuator
- ▶ Smaller door radii



024299
RADIUSBETAETIGER-Z-R

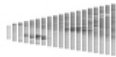
- ▶ Two stainless safety screws per actuator

Hinged actuator top for safety switches NZ.VZ, NZ.VZ.VS and TZ



057950
RADIUSBETAETIGER-Z-O

- ▶ Two stainless safety screws per actuator



074415
RADIUSBETAETIGER-Z-O/V25

- ▶ Two stainless safety screws per actuator
- ▶ Packaging unit 25 pieces

Bolt

Bolt BTC-TZ00... without escape release for safety switch TZ



106280
BTC-TZ00-C-TH-00-X

- ▶ Aluminum bolt
- ▶ For doors hinged on the left
- ▶ Can be locked in open position with padlocks
- ▶ Actuator included

Bolt TZ-C... for safety switches TZ



057737
RIEGEL TZ-C

- ▶ Steel bolt
- ▶ For doors hinged on the left
- ▶ Can be locked in open position with padlocks
- ▶ Actuator and switch bracket included



079799
RIEGEL TZ-C-NIRO

- ▶ Stainless steel bolt
- ▶ For doors hinged on the left
- ▶ Can be locked in open position with padlocks
- ▶ Actuator and switch bracket included



096058
RIEGEL TZ-C-NIRO-C2101

- ▶ Stainless steel bolt
- ▶ For doors hinged on the left
- ▶ Can be locked in open position with padlocks
- ▶ Actuator and switch bracket included



117194
RIEGEL TZ-C-NIRO-C2392

- ▶ Stainless steel bolt
- ▶ For doors hinged on the left
- ▶ Can be locked in open position with padlocks
- ▶ Actuator and switch bracket included

Bolts NZ/TZ-S1 and NZ/TZ-S2 for safety switches NZ.VZ, NZ.VZ.VS and TZ



028357
RIEGEL NZ/TZ-S1

- ▶ Aluminum bolt
- ▶ For doors hinged on the left or right. Cone grip bottom.
- ▶ Spring catch in open position
- ▶ Can be locked in open position with padlocks
- ▶ Actuator included



028359
RIEGEL NZ/TZ-S2

- ▶ Aluminum bolt
- ▶ For doors hinged on the left or right. Cone grip top.
- ▶ Spring catch in open position
- ▶ Can be locked in open position with padlocks
- ▶ Actuator included

Connection material

Cable glands M20x1.5, cable Ø 9-13 mm



077684
EKVM20/09

Function expansion

Adapter NZ/TZ 45/30



079033
ADAPTER NZ/TZ 45/30

- ▶ The adapter NZ/TZ 45/30 is used to compensate for different profiles, doors/frame 45/30

Lockout mechanism NZ.VZ/TZ, 3 holes



046730
SPERREINSATZ-Z-046730

- ▶ Prevents unintentional closing of the door
- ▶ Can be secured with padlocks



091305
SPERREINSATZ MIT KETTE

- ▶ Prevents unintentional closing of the door
- ▶ Can be secured with padlocks

Lockout mechanism NZ.VZ/TZ, 5 holes

086538
SPERREINSATZ-Z-086538

- ▶ Prevents unintentional closing of the door
- ▶ Can be secured with padlocks

Protective plate NZ.VZ/TZ

059136
SCHUTZBLECH NZ/TZ

Mounting accessories

Mounting plates EMP-B1 for actuators for safety switches CTP, TP...A, STA, STP, TX and TZ



093457
EMP-B1

Mounting plates EMP-B2 for actuators for safety switches CTP, TP...A, STA, STP, TX and TZ



093458
EMP-B2

Mounting plates EMP-SA for safety switches TZ



094401
EMP-SA

- ▶ For vertical and horizontal mounting of safety switch TZ

Safety screws M5 x 10

073455
M5X10-NIRO/V100 NZ/TZ

- ▶ Safety screws M5 x 10
- ▶ Packaging unit 100 pieces

Safety screws M5 x 16

073456
M5X16/V100

- ▶ Safety screws M5 x 16
- ▶ Packaging unit 100 pieces

Safety screws for actuators, M5 x 25

073457
M5X25/V100

- ▶ Safety screws M5 x 25
- ▶ Packaging unit 100 pieces

Spare parts

048257
PLOMBENSATZ TZ

Contacts

🏠 EUCHNER GmbH + Co. KG
Kohlhammerstraße 16
70771 Leinfelden-Echterdingen

☎ +49 711 7597-0

📠 +49 711 753316

✉ info(at)euchner.de